

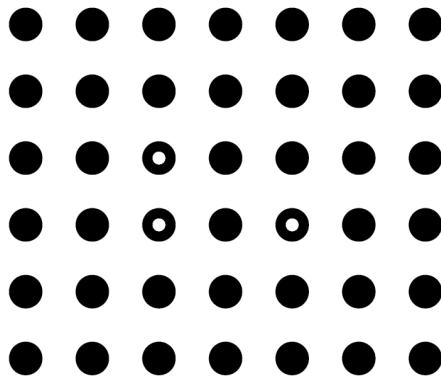
# Single Plane Calibration Plate

for StrainMaster

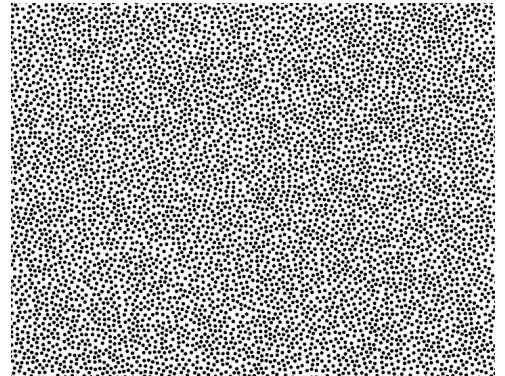
The **Single-sided Single Plane Calibration Plate** is a widely used tool for calibrating 2D and 3D DIC setups.

The calibration procedure when using this type of plate utilises several views of the plate at different positions and orientations within the depth of focus of the system. Marks are automatically detected, and all detected marks provide information which is used in the bundle adjustment calibration algorithm. During this live calibration procedure, the intrinsic and extrinsic camera parameters are calculated.

An additional feature of the plates are printed speckle patterns on the rear side, allowing the user to perform rigid body shift (0% strain) tests to quantify the uncertainty within the system.



*Calibration plate with three fiducials for orientation detection*



*Speckled rear side for 0 strain test*

## Features

- ▶ suitable for calibration of 2D and 3D StrainMaster DIC systems
- ▶ high precision dot pattern with three fiducials for orientation detection
- ▶ lightweight and easy to handle
- ▶ plates are provided with printed speckle pattern on the back side for 0 strain test according to VDI standard 2626

LaVision offers a set of four calibration plates suitable for different sized FoV's (Field of View)

## Ordering information

Part number	Description
1108994	Set of four single plane calibration plates; consists of: 1 x 80-8 SSSP; 80 x 72 mm 1 x 134-12 SSSP; 134 x 122 mm, speckled back side 1 x 286-39 SSSP; 286 x 247 mm 1 x 396-54 SSSP, 396 x 324 mm, speckled back side
1108943	1 x 1000-75 SSSP, 1000 x 1000 mm

Data provided by LaVision is believed to be true.  
However, no responsibility is assumed for possible inaccuracies or omissions. All data are subject to change without notice.

Please also refer to our datasheet for high-precision dual-plane calibration plates.

Sep-17

### LaVisionUK Ltd

2 Minton Place / Victoria Road  
Bicester, Oxon / OX26 6QB / United Kingdom  
E-Mail: [sales@lvision.com](mailto:sales@lvision.com) / [www.lvisionuk.com](http://www.lvisionuk.com)  
Phone: +44-(0)-870-997-6532 / Fax: +44-(0)-870-762-6252

### LaVision GmbH

Anna-Vandenhoeck-Ring 19  
D-37081 Göttingen / Germany  
E-Mail: [info@lvision.com](mailto:info@lvision.com) / [www.lvision.com](http://www.lvision.com)  
Tel. +49-(0)551-9004-0 / Fax +49-(0)551-9004-100

### LaVision Inc.

211 W. Michigan Ave. / Suite 100  
Ypsilanti, MI 48197 / USA  
E-mail: [sales@lvisioninc.com](mailto:sales@lvisioninc.com) / [www.lvisioninc.com](http://www.lvisioninc.com)  
Phone: (734) 485 - 0913 / Fax: (240) 465 - 4306